

It's so **SMART**... it makes cents.
SMARTANK™

MULTIPLE TANK APPLICATIONS



Generating a return on your tank monitor investment just got easier. SMARTank's new **LAN/WAN** architecture allows tank level information from **multiple** ("satellite") **tank monitors** to be consolidated by one ("master") monitor and then be reported with a **single cellular call**. This **unique multi-tank** architecture is completely wireless and provides the same convenience and flexibility as our single tank monitor. It also provides a **20-50% savings** when compared with typical multiple tank installations.

To get information about our 90-day money back guarantee evaluation program, call us today at 803-547-8265 or visit our Web site at www.smartlogixinc.com.



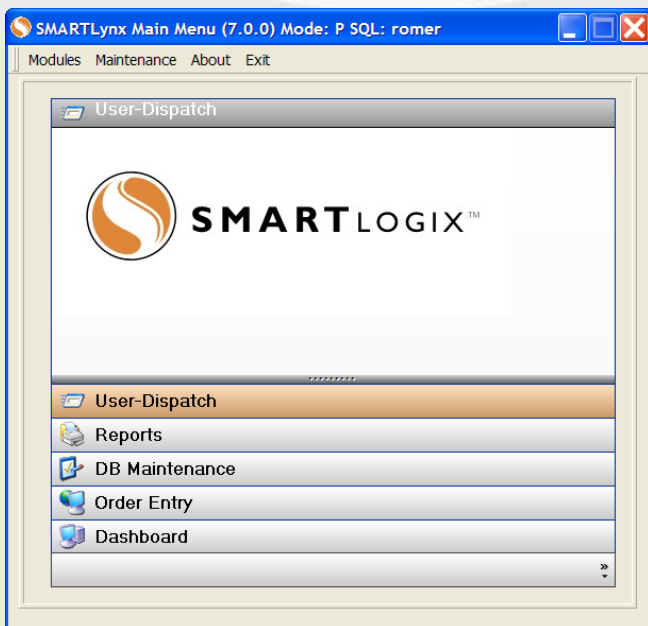
MULTIPLE TANK APPLICATIONS



The LAN/WAN “master”- “satellite” architecture links up to four tank monitors into a completely wireless 900 MHz network.

Key Features:

- > Sleek Low Profile Design
- > Long Life Lithium Ion Battery Power
- > 900MHz Local Area Network (LAN) Circuitry
- > Analog or GSM Wide Area Network (WAN) Modem
- > Heavy Duty DP or Magnetic Float Sensors
- > Low Operating Costs
- > Simple Installation
- > Easy Redeployment



SMARTank monitors provide the input to the SMARTlogix Digital Logistics Platform.

HOW IT WORKS:

SMARTank’s multi-tank (LAN/WAN) monitoring system uses 900MHz circuitry and either an analog or GSM cellular network to consolidate and communicate tank level information to the SMARTank data center.

Battery powered “master” units continually poll “satellite” monitors linked together in a wireless local area network. At a user determined time or when any tank in the local area network reaches an alarm level, the “master” unit consolidates and transmits tank level information to the SMARTank data center.

All network (“master” and “satellite”) monitors can be programmed remotely via the SMARTank web site. “Master” units can be set to call at a specific time of day, at predetermined intervals or when the product level in a network tank reaches a critical level.

Installation:

From the beginning, the hallmark of SMARTank’s success has been our unwavering commitment to customer support. For most customers, that means playing little or no role in the tank set-up on the web site. A driver simply drops the sensor into the tank and calls SMARTank’s Customer Service. A SMARTank representative records new customer information, instructs the installer to initialize the monitors and then stays on the phone until the reported tank level is verified and set up is complete.

Reporting:

The SMARTank web site allows you to generate customized web based reports, download to an Excel® spreadsheet or import tank level information to SMARTank’s Digital Dispatch & Delivery Software. In addition to tank level information, the SMARTank web site provides:

- Battery Life & Signal Strength
- Territory, Route, & Product Reporting
- Alarm Status
- Product Usage & Forecast
- Fill History

Dispatch & Deliveries:

SMARTank’s web application has been designed to fully integrate with SMARTruck’s™ Digital Dispatch & Delivery Software. Tanks flagged as “low” or “critically low” on the SMARTank web site are automatically downloaded to the SMARTruck’s dispatch module for review and assignment to delivery vehicles.